



## *Neighborhood Association Officers*

**President & Alderman**  
John Beck 815.289.4787  
[john.beck@rockfordil.gov](mailto:john.beck@rockfordil.gov)

**Vice President**  
Michelle Bowman

**Treasurer**  
Kim Millhorn

**Secretary**  
B.J. Alexis

## *Board Members*

Barb Berman  
Dick Berman  
Michael Goddard  
Phyllis Holm  
Mark Podemski  
Bill Simpson  
Jennifer Smith

## *Community Services Officer*

Brian Squires  
779.500.6676  
[brian.squires@rockfordil.gov](mailto:brian.squires@rockfordil.gov)

## *Welcome, Spring, we're glad to greet you!*

Spring not only brings about the awakening of the earth, it's also a time of awakening for our neighborhood! We are looking forward to seeing neighbors come out in droves for the **annual Edgewater Easter Egg Hunt on Saturday, April 20**. In addition to the egg hunt itself, get a great photo with the Easter Bunny with a festive photo backdrop. The festivities will begin at 10 a.m. at Oxford Park.

There are many other events coming up for Edgewater this spring, see page two for details!

**The Consolidated Election will be held on Tuesday, April 2.** There is still time to make an informed decision about the various races and issues on the ballot! More details can be found on page eleven.

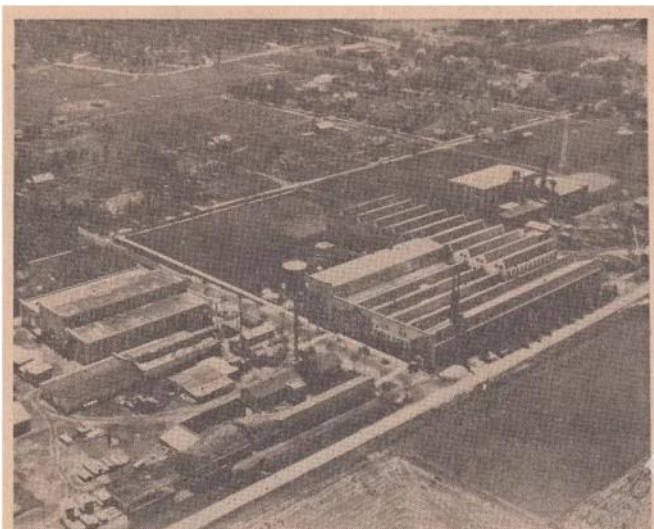


**All Edgewater neighbors are also invited to monthly Association meetings**, held the third Wednesday of each month at the Rockford Country Club at 5:30 p.m. Our April meeting will include a presentation about the newly established Northern Illinois Landbank Authority by Land Bank Coordinator Eric Setter (learn more on page two). Residents are welcome to come to every meeting with questions or concerns about our neighborhood and city. A light dinner is served; a donation is requested to help offset the cost of the meal.

On page nine you'll find some photos of and articles about the Ingersoll Milling Machine Company, some dating as far back as 1897. Winthrop Ingersoll moved his business to Rockford from Cleveland in 1891 and the factory, which was greatly expanded following each of the World Wars and throughout the mid-20th century, still stands between Fulton and Willoughby right here in our neighborhood. The photo at right was taken by air in 1923.

From all of the officers and board members of the Edgewater Neighborhood Association,

*Happy Spring!*



THE INGERSOLL PLANT IN 1923, after a period of rapid expansion brought about by World War One and a great influx of orders from the burgeoning automobile industry. At top, left: Greenwood Cemetery. Top right: North Main Street. Behind Ingersoll plant, at far right: the old Schuman piano factory, later absorbed by Ingersoll's expansion.

# Upcoming Neighborhood Events

Page 2

## Special Guest Speaker at April Neighborhood Association Meeting

Wednesday, April 17, 5:30 p.m. | Rockford Country Club



Our April Neighborhood Association meeting will feature a presentation about the recently established Northern Illinois Land Bank Authority. The Land Bank is unit of government that specializes in the acquisition of distressed, foreclosed or abandoned properties. It works to eliminate liens and tax liabilities and transfer clean titles to new owners in order to restore blighted properties and put them back into the hands of the private sector. The presenter will be Eric Setter, Land Bank Coordinator from the Region 1 Planning Council. We'll also hear from our Community Services Officer, Alderman Beck, and discuss regular board business. Light dinner is served and donations are accepted to offset the expense.

## Easter Egg Hunt

Saturday, April 20, 10 a.m. | Oxford Park

The annual Easter Egg Hunt is a favorite Edgewater tradition! Kids ages 3 and under have their own designated area so they can have fun at their own pace. Get a great (free!) photo with the Easter Bunny and a fun, festive photo backdrop.



## Neighborhood Spring Clean Up and Donation Drive

Saturday, April 27, 9 a.m. – Noon | Oxford Park

Join hundreds of Rockford neighbors participating in the Great American Cleanup! This is a great way to celebrate Earth Day with your family. You do NOT need to help for the full three hours to participate. Meet at Oxford Park; trash bags, gloves, and pick up tools provided. Additionally, this year we will again partner with Goodwill to hold a Donation Drive! A donation bin will be on hand at Oxford Park to collect your new and gently used clothing and household items (visit [Goodwill's website](http://Goodwill's website) to see what can/cannot be donated). Donation receipts will be available for tax deduction purposes. Help Edgewater spruce up AND make spring cleaning a little bit easier this year.



## Neighborhood-wide Garage Sales

Saturday, May 4, 8 a.m. – 5 p.m.

The annual Edgewater Neighborhood Garage sales will be held the first Saturday in May. Planning to hold a sale? Use this link to add your sale to Edgewater's sales map: <https://goo.gl/forms/iqWL2zMCYG4FPI2j2>. The map will be published on [Edgewater's website](#), [Facebook](#), [NextDoor](#), and physical copies will be available in the neighborhood at Harlem and Auburn (near the neighborhood sign) and at Cumberland and Auburn. We'll also promote the sales with an ad in the Rockford Register Star.



## 4th of July Celebration

Thursday, July 4, Oxford Park

Summer wouldn't be complete without an Edgewater 4th of July!

6:00PM -- Food and beverage sales begin -- cotton candy and popcorn will be for sale by the neighborhood association and we'll have food vendors with hamburgers, hot dogs, desserts, and more! There will also be face painting and music.

6:30PM -- Kids of all ages are invited to decorate your bikes and join the Kid's Bike Parade; all participants receive a goodie bag and are entered for great door prizes.

DUSK -- Fireworks shot off by the Rockford Country Club

We are very grateful to the Rockford Country Club for continuing to provide fireworks that the whole neighborhood can enjoy!







## ROCKFORD COUNTRY CLUB A PROUD MEMBER OF THE EDGEWATER NEIGHBORHOOD SINCE 1889

Rockford Country Club offers the perfect one-year memberships to preview everything we have to offer. Golf Preview Membership allows unlimited family access to golf, pool, tennis, skeet, dining, and social events. Social Preview Membership allows unlimited family access to the pool, tennis, skeet, dining, and social events.

**CALL FOR YOUR PERSONALIZED TOUR TODAY!**

2500 Oxford Street    [www.rockfordcc.com](http://www.rockfordcc.com)    815.968.9881





## What you need to know about new City of Rockford Convenience Fees

In 2017, the City of Rockford convened a citizen-led Finance Task Force to help develop cost savings and revenue generation methods to reduce the City's cumulative budget deficit. Implementing a convenience fee related to billing and payment acceptance was one of the Task Force's recommendations. These fees are common with public utilities and financial institutions. They are intended to motivate customers to switch to the lowest cost bill delivery and payment options the City offers, which will reduce City costs.

Rockford City Council recently approved the details of and parameters for the convenience fee structure. There are a variety of options for bill delivery and payment. **Several options will not incur a fee.**

DELIVERY METHOD	FEE	PAYMENT TYPE	PAYMENT FEE	TOTAL FEE (PER BILL/PAYMENT)
Paper bill	\$2	Mailed check (including payments made through a bank's online bill payment system)	\$0	\$2
Paper bill	\$2	Phone payment	\$3	\$5
Paper bill	\$2	One-time online payment	\$2	\$4
Paper bill	\$2	In-person payment: City Hall customer service or drop box	\$0	\$2
Electronic bill	\$0	Mailed check (including payments made through a bank's online bill payment system)	\$0	\$0
Electronic bill	\$0	Automatic online payment	\$0	\$0
Electronic bill	\$0	Phone payment	\$3	\$3
Electronic bill	\$0	One-time online payment	\$2	\$2
Electronic bill	\$0	In-person payment: City Hall customer service or drop box	\$0	\$0

### How do I sign up for electronic billing?

Property owners can sign up to receive an electronic bill online: <https://schedulepayment.com/cor> They will need their customer number and account number from a recent water bill to sign up.

### How do I make online payments?

Once a property owner creates an online account, they can sign up for electronic bills, automatic payments from a bank account, debit or credit card, or make a one-time online payment. <https://schedulepayment.com/cor>

### What if I don't want a payment taken automatically from my bank account?

Customers who do not want to provide bank or credit card information for automatic debit can still sign up for electronic bills and have their bill emailed each month. They can pay their bill by mailing a check, paying through their bank's online bill payment system (which mails the City a check), dropping a payment in the City Hall drop box, or paying at the Customer Service Center at City Hall. None of these payment methods will incur a fee.

### Do other cities charge convenience fees?

Many municipalities charge convenience fees including Loves Park, Janesville and Joliet. In addition, ComEd and Nicor also charge fees for phone and online payments.



*Ahimsa-Yoga with Keri*

Weekly classes, private sessions,  
& Corporate yoga available!

Learn more by visiting:  
[www.keri.yoga](http://www.keri.yoga)  
[Facebook.com/ahimsayogawithkeri](https://Facebook.com/ahimsayogawithkeri)

Contact Keri: 815.312.2830  
[Keri@keri.yoga](mailto:Keri@keri.yoga)

Official Yoga Teacher of the  
Rockford Icehogs!

## *Yard Refuse Pickup, Street Sweeping, Hydrant Flushing*



**Yard refuse pickup begins the week of April 1st** and occurs on the same day your trash is picked up. Refuse including leaves, grass, and sticks should be placed in brown paper yard waste bags or in garbage cans that are clearly marked with an "X". Branches may be no more than 4 inches in diameter, trimmed to 4 feet in length, and no bundle of branches or yard waste bag/can should weigh more than 50 pounds. **Reminder:** Trash and yard refuse should not be placed in the street but up on the right of way or driveway.

Spring residential street sweeping will begin after arterial streets are completed. The transition is anticipated at the end of April. We'll share more precise dates via Facebook and Nextdoor when they are available and you can also check the [City of Rockford Street Division webpage](#) for updates.

Hydrant flushing typically begins in May; the city is divided into zones and each zone has an estimated timeframe for flushing. We'll share more precise dates when they are available.

## *Potholes and Patching*

It was a rough winter for melting and thawing, and it's done a number on our streets! Public works staff are patching holes citywide, both proactively and by citizen request. See a pothole that needs fixing? Please report it to (779) 348-7260.

## **For Housing News, Visit: Edgewater-Homes.com**



**Keith Kelly**

**815-509-3655**

[keithk@dickersonnieman.com](mailto:keithk@dickersonnieman.com)



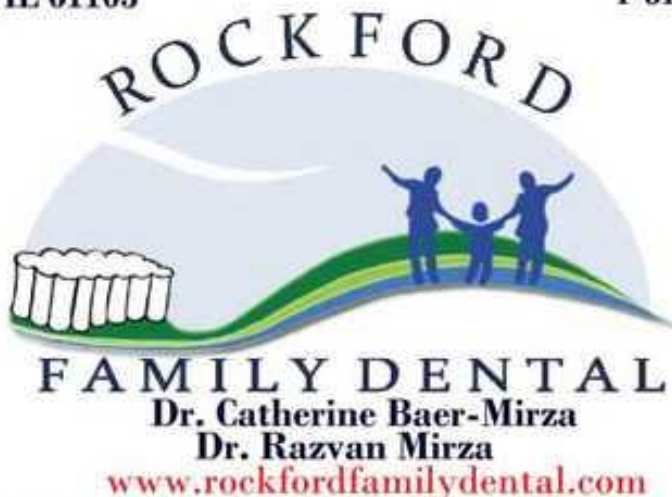
## *Storm Drains*

Street sweepers will help clear winter debris from our streets, but you can help ensure our water system remains efficient and free from excessive yard waste and trash by taking an extra look at any storm drains in the street along your property. As spring rains begin, even partially blocked storm drains can cause major flooding problems. While you're out starting spring yard work take a moment to clear a storm drain!



2715 N. Main St.  
Rockford, IL 61103

P 815-964-8713  
F 815-964-3719





# Upcoming Community Events

Page 6

## MELT FEST 2019

Sat. March 23

*Meltfest* | Saturday, March 23

Head downtown for a full day of fun at the 6th annual Meltfest! This free, family-friendly festival (celebrating the melting away of winter and the melting together of the community!) starts with a 5k at 10 a.m. and continues all day with kids activities, ice skating, kayaking in the YMCA pool, science, magic, and juggling shows, live music, Melt the Blocks specials at many downtown businesses, a family bike ride, and a beer tasting at the downtown Sports Factory! Find all the details at [Meltfest.com](http://Meltfest.com)!



*Spring Art Scene* | Friday, April 12, 5-9 p.m.

Saturday, April 13, 4-9 p.m. (some locations open later each night)

ArtScene in late April brings out thousands of art-lovers to galleries and studios all over town, to enjoy new exhibits of original works. Art Scene attracts so many fans because it is free, and it's fun for both the browser and the buyer. The event is coordinated by Rockford Area Arts Council.

Several of the exhibits are in or very near Edgewater, including: Gallery 5, 1404 N. Main; Horseflower's Art Gallery/Vintage Boutique, 1416 N. Main; Kjeller filmlab + gallery, 1402 N. Main; Main Street Gallery by M & M Photography, 1404 N. Main Suite 4; Norwegian Art Co-op, 1404 N. Main Suite 2; The Calm Company Wellness & Yoga, 1404 N. Main Suite 3; The Olympic Tavern, 2327 N. Main.

View all the details and maps of each location at [SpringArtScene.com](http://SpringArtScene.com)



*Edgewater Neighborhood Association* | [RockfordEdgewater.org](http://RockfordEdgewater.org) | PO Box 515 Rockford, IL 61105 | [f](https://www.facebook.com/EdgewaterNeighborhoodAssociation) Edgewater Neighborhood Association

### Compare Our CD Rates

Bank-issued, FDIC-insured

3-month	<b>2.30 %</b> APY*	Minimum deposit \$1000.00
6-month	<b>2.40 %</b> APY*	Minimum deposit \$1000.00
3-year	<b>2.75 %</b> APY*	Minimum deposit \$1000.00

\* Annual Percentage Yield (APY) effective 03/13/2019. CDs offered by Edward Jones are bank-issued and FDIC-insured up to \$250,000 (principal and interest accrued but not yet paid) per depositor, per insured depository institution, for each account ownership category. Please visit [www.fdic.gov](http://www.fdic.gov) or contact your financial advisor for additional information. Subject to availability and price change. CD values are subject to interest rate risk such that when interest rates rise, the prices of CDs can decrease. If CDs are sold prior to maturity, the investor can lose principal value. FDIC insurance does not cover losses in market value. Early withdrawal may not be permitted. Yields quoted are net of all commissions. CDs require the distribution of interest and do not allow interest to compound. CDs offered through Edward Jones are issued by banks and thrifts nationwide. All CDs sold by Edward Jones are registered with the Depository Trust Corp. (DTC).

Call or visit your local financial advisor today.



**Michelle R Bowman, AAMS\*, CRPC\***

Financial Advisor

2715 N Main St  
Rockford, IL 61103-3111  
815-636-6665

[www.edwardjones.com](http://www.edwardjones.com)  
Member SIPC

**Edward Jones**  
MAKING SENSE OF INVESTING

*Rockford City Market and  
North End Market*

**City Market: Fridays, starting May 17,  
3:30—8:30 p.m.**

Intersection of State & Water St., downtown Rockford

**North End Market: Saturdays, starting  
May 18, 9 a.m.—1 p.m.**

SE corner of North Main and Auburn

Just a few more weeks until City Market and North End Market start up again! Live music, fresh produce, local handmade goods, and delicious food make both these weekly events popular with residents and visitors alike. The North End Market is just a short walk or bike ride from Edgewater and a great way to meet neighbors and friends in our own stomping grounds!

[www.rockfordcitymarket.com](http://www.rockfordcitymarket.com)



## Updates on Swedish-American Edgewater Medical Center

This winter weather has not made it easy for local construction projects, but work on the new SwedishAmerican Medical Center continues to progress.

Located at 2909 N. Main Street, the center now has its steel joists erected and the deck is currently being installed on the second floor. Masonry installation, the east and west stair towers and the elevator shaft have all been completed.

The 18,000-square foot center is scheduled to open later this year. The facility will feature 22 clinic rooms (supporting approximately seven providers) and will include OB/GYN, family medicine and ancillary services including lab and medical imaging. This clinic was also designed with anticipation of future expansion.



## Promote your business to Edgewater neighbors!

### NEWSLETTER AD PRICING

\*\*Pages are letter sized (8.5 in x 11 in)

#### Digital Newsletter (Spring, Summer Fall)

- Emailed to 300+ neighbors
- Posted on neighborhood website
- Shared on Facebook (800+ followers)
- Shared on NextDoor (875+ members)

Business Card size	\$20
Quarter Page	\$25
Half Page	\$50
Full Page	\$100

#### Print Newsletter (Winter)

- Mailed to 1200 households
- Emailed to 300+ neighbors
- Posted on neighborhood website
- Shared on Facebook (800+ followers)
- Shared on NextDoor (875+ members)

Business Card size	\$30
Quarter Page	\$40
Half Page	\$75
Full Page	\$125

### NEWSLETTER AD DEADLINES for 2019

#### SPRING

Ad Deadline	March 15
Newsletter Published	March 18

#### SUMMER

Ad Deadline	June 14
Newsletter Published	June 17

#### FALL

Ad Deadline	September 13
Newsletter Published	September 16

#### WINTER

Ad Deadline	November 22
Newsletter Published	November 25

### WEBSITE ADS

#### Homepage ([rockfordedgewater.org](http://rockfordedgewater.org))

- Logo posted in "Featured Partners" gallery and linked to your website
- Ad posted and linked to your website
- Pop-up ad (general, coupon, sale, event)

Logo	\$50/1 year
Ad (general)	\$100/1 year
Ad (sale/coupon/event)	\$25/1 month
Pop-up	\$100/1 month

#### Resources/Amenities page

([rockfordedgewater.org/amenities](http://rockfordedgewater.org/amenities))

- Logo posted and linked to your website
- Ad posted and linked to your website

Logo	\$25/1 year
Ad (general)	\$50/1 year



Run an ad in the Edgewater newsletter OR on the new Edgewater website and reach hundreds of neighbors in Edgewater and beyond.

Edgewater encompasses 1200 households within the borders of Auburn St. on the south, North Main St. on the west, the Rock River on the east, and railroad tracks to the north. The Edgewater Neighborhood Association welcomes ads from businesses and services in and near Edgewater, as well as the larger Rockford community.

For questions and to submit ads/logos, email [rockfordegdewater@gmail.com](mailto:rockfordegdewater@gmail.com). When submitting ad/logo, please include name and email address of person to whom invoice should be directed.





## Edgewater Medical Center

At Swedes we understand you and are here for you.

Because after all, we're close like family which is why we're growing for the community!

**Edgewater Medical Center** will be a beautiful facility providing primary care, obstetrics and so much more.

We can't wait to serve the Edgewater community.

For more information or to find a doctor that's right for you, visit [SwedishAmerican.org](http://SwedishAmerican.org).

**SWEDISHAMERICAN**  
**A DIVISION OF UW HEALTH**

Coming soon at 2909 N. Main Street | Rockford, Illinois



# A Glimpse of Edgewater History

10 ★ ROCKFORD MORNING STAR AND REGISTER

## First Plant Employed 19 Ingersoll Grew With Cars

In this age of mass production it may seem odd to hear of a 1891. In general, the company makes the machines that make the machines for other companies. Ingersoll's customer list has included most of the world's more important manufacturers.

Winthrop Ingersoll moved his tiny machine tool business to Rockford when a group of local real estate promoters agreed to put up \$29,000 new capital. Today this does not sound like much money, but Ingersoll's first Rockford plant, which employed 19 people, cost only \$12,000.

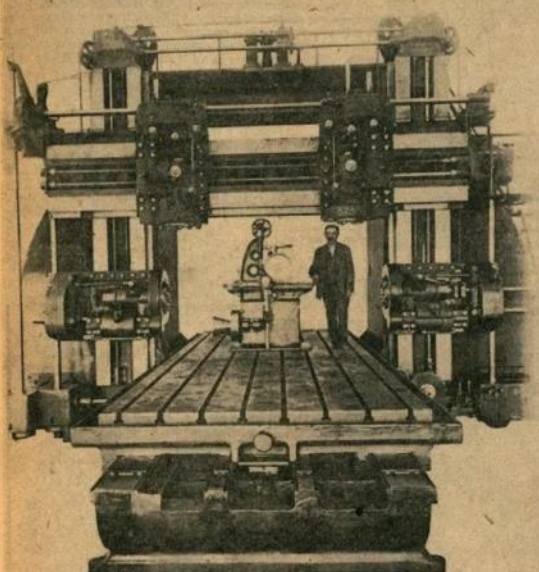
During the next few years the going was slow at Ingersoll. Many of the backers of the company became disheartened and sold their interests at ten cents on the dollar. Often on pay day Ingersoll had to pay his help with IOUs.

After 1912, though, Ingersoll's perseverance began to pay off. Two events sparked sales. First was the rapid growth of the automobile industry; second was World War II.

Today, Ingersoll employs about 1,200 people to make machines used by the manufacturers of automobiles, locomotives, printing presses, diesel engines and electrical generators. Rockford's electric power comes from generators made on Ingersoll machines.

Ingersoll buys from and sells to other Rockford machine manufacturers. The company has built machines for Greenlee, W. F. John Barnes Co., Barnes Drill Co., Sundstrand and Barber-Cushman. In return, Ingersoll buys machines from most of these.

Ingersoll machines vary greatly in size. The smallest ones are room grinders. The largest is an adjustable rail milling machine which can handle a piece the size of a railroad flat car. This machine weighs 204 tons and is 40 feet high.



The 1887 machine beside the man on the table of the larger machine was built by Ingersoll in Cleveland, before the plant moved to Rockford. The 1905 machine—a true giant for its day—weighed 314,000 pounds and was priced at \$20,000.

[View this item online](#)



DOUGLAS STREET, 1923: It was about this time that many employees began driving their own automobiles to work and motor trucks replaced horse-drawn wagons for local hauling. This latter transition was completed at Ingersoll when the company's last draft horse fell into a cistern in the yard at the left and was drowned.

[View this item online](#)

Source: Rockford Morning Star/Rockford Register-Republic "Century Plus 10" Special Edition, March 1962

[View this item online](#)



Source: Rockford Morning Star and Rockford Register-Republic "Century Plus 10" Special Edition, March 1962

Upper right: "Present-Day Plant is dominated by machine assembly building erected in 1953."

Lower right: "Cutting Tool Plant (1957) faces playground which occupies east portion on Ingersoll property."

Picture at left: "In assembly area the size of a football field, some of the world's largest machine tools for cutting metal are put together and tested before being shipped to Ingersoll customers all over the world."

## Deli Italia

3004 N. Main




Large pizza slices for \$3 and Chicago-style slices for \$4 every day!

815-633-8270  
[www.deliitalia.us](http://www.deliitalia.us)







*“It’s spring fever. That is what the name of it is. And when you’ve got it, you want – oh, you don’t quite know what it is you do want, but it just fairly makes your heart ache, you want it so!”*

-Mark Twain



**PAMPERED PET  
GROOMING**

## **Do-It-Yourself Dog Wash**

**Includes: Brushes and Combs,  
Towels, Aprons, Power Dryer and a  
Walk In Tub.**

**\$12.00 for ½ hour**

**\$20.00 for one hour,**

**NW corner of N. Main and Riverside**

**Call to make an appointment,  
please:**

**815-282-9663**



# Consolidated Election April 2nd

Page 11

## Election Day is April 2!

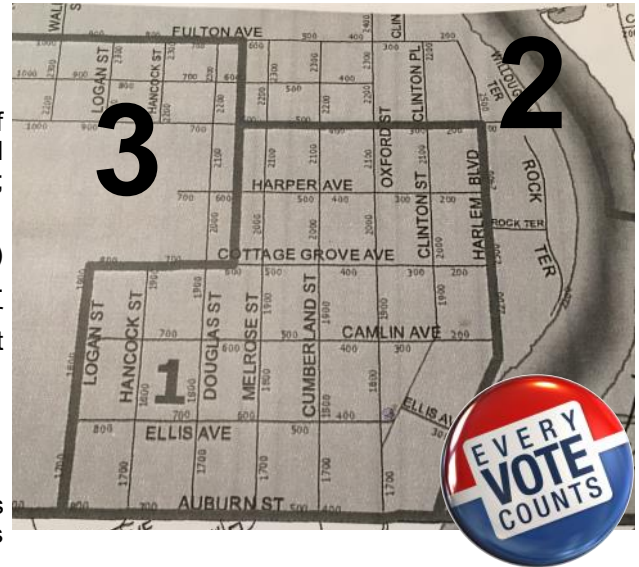
The Primary Election is rapidly approaching, but voters still have plenty of time to make an informed decision. On the Rockford ballot: RPS205 School Board; Rock Valley College Trustees; Rockford Park District Trustees; Regional School Board Trustees. A sample ballot can be found [here](#).

Early voting has begun at the Rockford Board of Elections (301 S 6th St) through April 1; visit [VoteRockford.com](http://VoteRockford.com) or call 815-987-5750 for open hours. On election day (April 2) you must vote at your polling place. Edgewater residents do not all have the same polling place. Check the map to the right or visit [VoteRockford.com](http://VoteRockford.com) to determine your polling center:

**#1** — Third Presbyterian Church, 1221 Custer Ave

**#2 & #3** — Beth-Eden United Methodist Church, 3201 Huffman Blvd

The 12th Ward is known for its high voter turnout and engaged citizens; let's make sure the April 2 election proves yet again that Edgewater residents are making their voice heard at the polls!



## Become a Member of the Edgewater Neighborhood Association!

The Edgewater Neighborhood Association was established in 1979 to create a greater sense of community and provide resources that help keep Edgewater a beautiful, safe, and inviting place to live. Your annually-renewable \$20 Membership fee supports:

- ⊗ Seasonal Neighborhood Activities including the Easter Egg Hunt, Annual Garage Sale, 4th of July Festivities in Oxford Park, and Luminaria (including Luminaries placed in public places like the Auburn Street Bridge).
- ⊗ Snow Plow Fund: The City does not plow Edgewater's many alleys, so as a neighborhood we pool our resources and contract with a plow service to keep those alleys clear all winter long.
- ⊗ Watering planters on Auburn Street and the north side of Auburn Street Bridge.
- ⊗ Postage for neighborhood mailings and printing of those mailings, as well as signs advertising neighborhood activities.

Thank you for your Membership and for helping Edgewater continue to be the vibrant, unique neighborhood we can be proud to call home!

Please mail your completed form with check to:  
Edgewater Neighborhood Association  
PO Box 515  
Rockford, IL 61105

Checks may be made out to Edgewater Neighborhood Association. Prefer to pay by card or PayPal?  
Pay online at [rockfordedgewater.org/membership](http://rockfordedgewater.org/membership)!

Name \_\_\_\_\_

Address \_\_\_\_\_  
(Used for Edgewater mailings)

Phone \_\_\_\_\_  
(Used for Edgewater information only)

Email \_\_\_\_\_  
(Receive updates from our Alderman and Neighborhood Association President, John Beck)

Membership Dues **\$20**

Additional Donation \_\_\_\_\_  
(to support snow removal and other neighborhood activities)

**TOTAL** \_\_\_\_\_